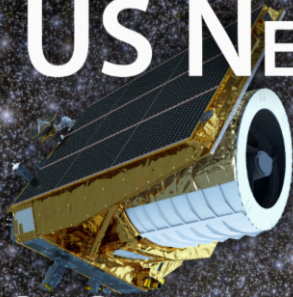


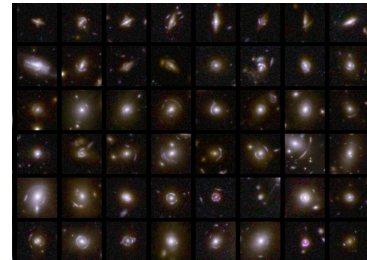
# EUCLID US NEWSLETTER



Euclid NASA Science Center at IPAC

## Euclid science papers from Q1

Together with the March 19, 2025 Q1 data release, the Euclid Consortium submitted 27 papers on Q1 data covering a range of subjects including strong lensing, active galactic nuclei, and galaxy morphology. Half of the papers used machine learning in the analysis. The collaboration also published papers on each pipeline processing function. The list of Q1 papers can be found [here](#).



## ENSCI User Panel Report

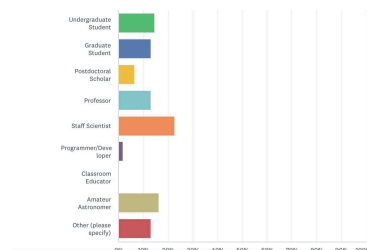
The ENSCI User Panel meeting was held on May 28th 2025 at IPAC. The Panel reviewed and discussed ENSCI's objectives, recent achievements, and goals. Their report emphasized the critical role of international partnerships for NASA science and commended ENSCI's success in enabling US-based Euclid science investigations. The full report from the 2025 User Panel is available [here](#).



## ENSCI User Survey Results

The first ENSCI User Survey was open from November 2025 to January 2026. User responses provided insight into how they use Euclid data and how ENSCI supports the community. A summary of the results are [here](#). ENSCI's next survey will be conducted in advance of Data Release 1.

What is your occupation?



\*Newsletter created by Euclid NASA Science Center at IPAC (ENSCI), July 2025