

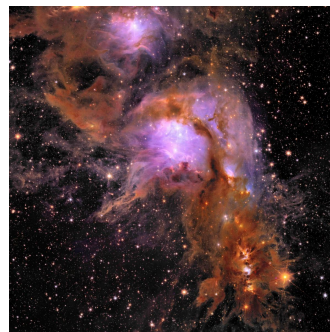
EUCLID US NEWSLETTER



Euclid NASA Science Center at IPAC

User Survey for US community

ENSCI is doing a User Survey of the US Euclid community to support the upcoming Q1 data release. In particular, we would like to get a better understanding of how the community plans to interact with Euclid data and how we can best advocate for and support them. Please fill out the survey, your participation helps us support you. The survey can be found [here](#).



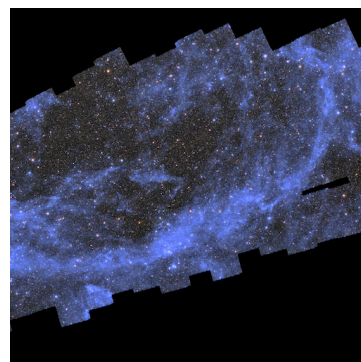
Euclid at the Winter AAS 2025

ENSCI is organizing a special session at the AAS: "The Euclid Mission: First Results and Opportunities for Archival Research" on Tuesday, January 14th from 2-3:30 pm. ENSCI scientist Shoubaneh Hemmati will also present a hyperwall talk about Euclid: "US Archival Science with Data from The Euclid Mission" on Tuesday January 14th at 9:15 am. To learn more about Euclid and what we do at ENSCI, please visit us at the IPAC booth at the AAS. We hope to see you there!



ESA releases mosaic of 1% of the wide survey of Euclid

ESA released the first piece of its great map of the Universe. The mosaic contains 260 observations made between 25 March and 8 April 2024. In just two weeks, Euclid covered 132 square degrees of the Southern Sky in pristine detail, more than 500 times the area of the full Moon. To view the stunning mosaic, [click here](#).



*This Newsletter is created by Euclid NASA Science Center at IPAC (ENSCI).

Caltech / IPAC | 770 South Wilson Ave | Pasadena, CA 91125 US

[Unsubscribe](#) | [Update Profile](#) | [Constant Contact Data Notice](#)



Try email marketing for free today!